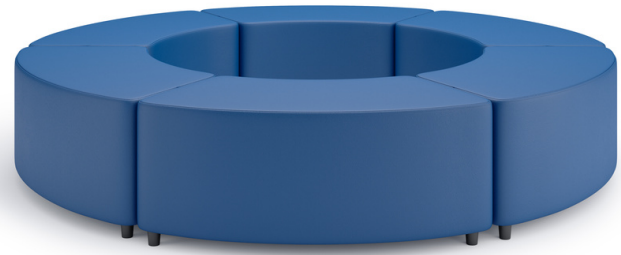


# Leo Wěl






## Features

- Frame made of solid 1" thick plywood
- All joints are stapled and glued for long-lasting quality
- The frame is covered completely with 2.2lb high-density foam for ultimate comfort and to soften the edges
- Foam is CAL TB117-2013 Fire Compliant
- Every seam is double-stitched and uses India tape which acts as a moisture barrier making the seams virtually indestructible
- Five 1.5" tall non-marking glides to protect the floor from damage

## Options

- Available in three heights
- Available in a wide range of upholstery

	Model #	Width	Depth	Height	Seat Height	COM Full	Weight	Cubic Feet
14" 	LEOW14	23.5" / 42"	21"	14"	14"	2.8	25 lbs	7
16" 	LEOW16	23.5" / 42"	21"	16"	16"	2.8	27 lbs	8
18" 	LEOW18	23.5" / 42"	21"	18"	18"	2.8	29 lbs	9

*Please note the dimensions are per individual piece*