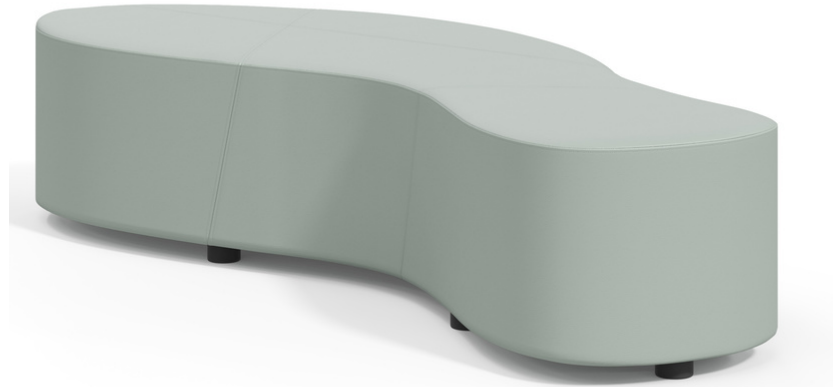
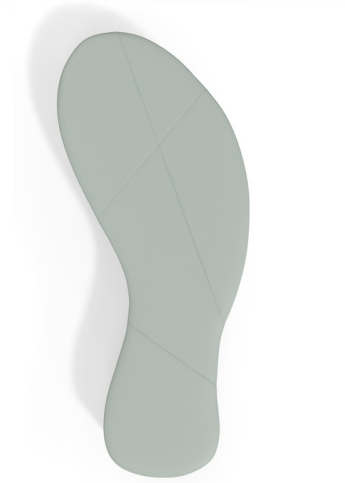


# Cas






## Features

- The base is 3/4" thick plywood
- The foam is 2.2lb high-density foam for ultimate comfort
- Every seam is double-stitched and uses India tape which is a moisture barrier making the seams virtually indestructible
- The india tape also creates a bed bug barrier when used with vinyl
- 1.5" tall non-marring poly legs to protect the floor from damage
- Lifetime warranty, including frame, foam, and stitching



## Options

- Available in three heights
- Available in a wide range of upholstery

	Model #	Width	Depth	Height	Seat Height	COM Full	Weight	Cubic Feet
14" 	CAS14	66"	24"	14"	14"	5"	45 lbs	13
16" 	CAS16	66"	24"	16"	16"	5"	45 lbs	14.5
18" 	CAS18	66"	24"	18"	18"	5"	45 lbs	16.5



Child & Adult Sized Seating!

**flexxform**  
...because one size doesn't fit all